



Yale  
Postdoctoral  
Association

Yale

# Yale Postdoctoral Association Open Forum

2026.06.09



# CHECK-IN

YPA OPEN FORUM JUNE 2026

TUESDAY, JUNE 9 AT 6:00PM



<https://cglink.me/2dA/c232412652523152>

If you experience issues with  
Check in, you may want to  
be sure you are registered  
first

REGISTRATION





# Yale Postdoctoral Association: from the postdocs to the postdocs

Founded in 2014



We serve **over 1,500 postdocs and Associate Research Scientist (ARS)** at Yale.

## Our Missions:

- Building a supportive community
- Connecting different disciplines
- Enhancing the postdoc experience
- Supporting career transitions



## Empowering Postdocs & Researchers

Connect, learn and succeed within our diverse postdoc community at Yale.

Join the YPA

# Yale Postdoctoral Association: Organization Chart

## Yale Postdoctoral Association

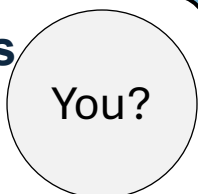
### Executive Board



**Chairs**  
Cristina  
Peng



**Communications**  
Danielle  
Vacant



You?



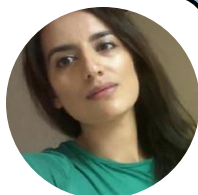
**Secretary**  
Anne  
Harshini



**Treasury**  
Jane  
Nikita



**Advocacy**  
Afsheen  
Ammara



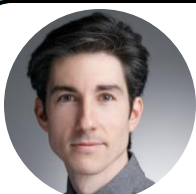
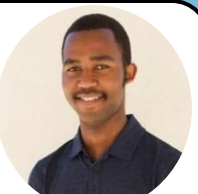
**Belonging**  
Merrill  
Tianyu



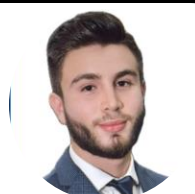
**Mentorship**  
Carolina  
Fatima



**Community & Networking**  
Devika  
Mgayya



**Professional Development**  
Rafael  
Juan



**Symposium**  
Eunate  
Nebal



Committee members & YPA Liaisons

YPA members: All postdocs and Associate Research Scientists (ARS)

# Chairs



Thank you for this wonderful year!

Elections are completed – Results will be announced at the end of Open Forum!

Don't leave after Open Forum, YPA Celebration will follow





# Chairs

---

## **Include your event in the shared calendar**

- It helps visually understanding the number of weekly events
- Helps coordinating better with the other committees

**Remember to track attendance at your event and report the number in the column Y of the Event Tracker spreadsheet**

**SEND OPEN FORUM AGENDA BY FRIDAY!!!**

**We are also looking for committees' coordinators!**

# Chairs

---

## Resources for Postdocs

- **Counseling and Support**

- Yale offers confidential counseling services through Optum, available 24/7 at 1-866-416-6586.
- Visit the Your Well-Being website (<https://your.yale.edu/working-at-yale/benefits/your-well-being>) for additional information and resources.

- **Reach out for help**

- If you are experiencing treating situations, please look for help. YPA is happy to share resources and **won't leave you alone!**

**YPA Chairs: [ypa@yale.edu](mailto:ypa@yale.edu)**

*(For any support please contact the Chairs, we are here for you)*

*(For any questions related to OPA please contact Chairs first and always have [ypa@yale.edu](mailto:ypa@yale.edu) cc'd while contacting OPA)*



# Secretaries

---

- Please remember to upload your slides by Friday before Open Forum!
- Looking for new members!
- New secretary co-coordinator candidate: Nai Yang Yeat

No objections were raised

Email: [secretaries.ypa@yale.edu](mailto:secretaries.ypa@yale.edu) and please cc Anne: [anne-marie.rickmann@yale.edu](mailto:anne-marie.rickmann@yale.edu)



# Treasury

---

- Update: Jane **will** be staying on as YPA Co-Treasurer.
- Treasury is currently collecting outstanding receipts for fiscal year-end.
- Please label all receipts with the YPA- event number.
- We are reconciling event expenses and resolving any receipt discrepancies.
- A final financial update will follow once reconciliation is complete.
- June Treasury meeting TBC

YPA Treasury Email: [treasury.ypa@yale.edu](mailto:treasury.ypa@yale.edu)

# Symposium Committee

- **Successful Symposium at June 5th: We had 379 official registrations and many more walk in! The highest registration through all years!**
- Keynote speaker Dr. Monica Mojer and Career Panel successful
- 5 different Sponsors
- 2 Poster prizes and 2 talk prizes
- Headshot session
- First feedbacks are very good
- Social gathering at Blue Orchid: 115 participant

- We are looking for new members and Coordinators, we did not decide yet (very Busy!!)
- To join the Symposium committee, contact:
  - [Nebal.abuhussein@yale.edu](mailto:Nebal.abuhussein@yale.edu)
  - [Eunate.gallardo@yale.edu](mailto:Eunate.gallardo@yale.edu)
  - [Yps@yale.edu](mailto:Yps@yale.edu)



# Belonging Committee



## Mental Health in Academia Event

Co-hosted with YPGA the Mental Health, 15 Yale researchers join us for an open and meaningful discussion on mental health-related issues in academia.



## Pride Month Celebration

June 20th, 6-8pm at Blue Orchid  
Food and drinks provided!

**We are Recruiting!**

Join us for the wonderful events!

Please reach out to:



## Modern Self-Defense Classes

Begins June 16, 6-7pm  
BCMM 206/208

Merrill Asp [merrill.asp@yale.edu](mailto:merrill.asp@yale.edu)  
Tianyu Zhu  
[t.zhu@yale.edu](mailto:t.zhu@yale.edu)



# Communications Committee

---

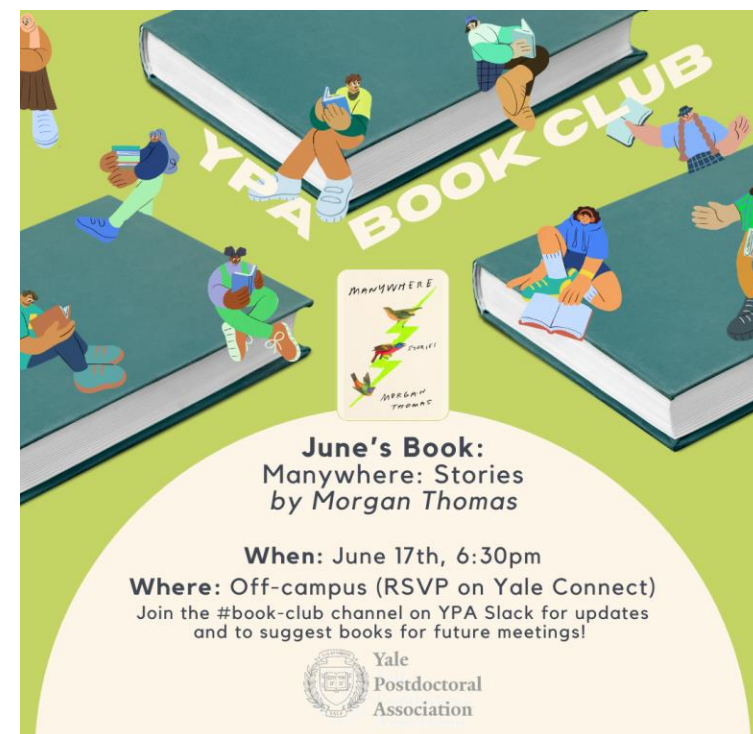
- E-mail [danielle.sohai@yale.edu](mailto:danielle.sohai@yale.edu) if you or anyone you know is interested in becoming a communications coordinator!
- New YPA spotlight series – either this week or next week's newsletter.
- New YPA communications member: hello to Valeria Castaldi!

## Past Events

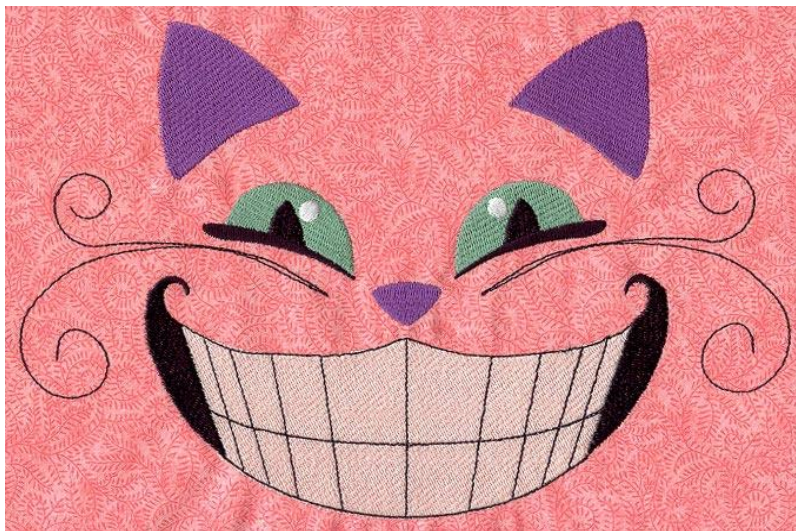
- ❖ May 27 – Book Club: *The Seven Husbands of Evelyn Hugo*
- ❖ May 28 – Happy Hour

## Upcoming Events

- ❖ June 17 – Book Club: *Manywhere: Stories* by Morgan Thomas
- ❖ June 24 – FIFA Watch Party - Blue Orchid 7pm



**THANK YOU ALL FOR AN AMAZING YEAR!!**



## **New Academic Year Upcoming Events**

- ❖ July 22 – Board Game Night
- ❖ July TBD - Book Club

Coordinators: Devika Gireesan Sudha – [devika.gireesansudha@yale.edu](mailto:devika.gireesansudha@yale.edu)  
Mgayya Makullah – [mgayya.makullah@yale.edu](mailto:mgayya.makullah@yale.edu)



# Mentorship Committee

---

- Committee Meeting last month (May 21)
- Modern Instructor Program is ongoing, scientific writing series part one is on June 9 and part two on June 30 ( 5:00-6:00 pm).

Topic: The Art of Planning and Publishing Impactful Research. Please register!

- In collaboration with Advocacy Committee to initiate Advisory Team Program
- Caroline is stepping down this month and the new coordinator is Giulia Lorenzon – no objections were raised

## Past Events

- ❖ May 14<sup>th</sup>: Pint of Postdoc
- ❖ May 20<sup>th</sup> career café 2: Journey into academia




**PINT OF POSTDOC**  
 MAY 14TH, THURSDAY  
 East Rock Brewery - 285 Nicoll St  
 6:30 to 9 pm


**Tracing Food's Care and Knowledge Networks for Healing**  
 Elizabeth Grace Wong, Ph.D  
 Department of Mental Health & Counseling


**Herpesviruses, not just an STI**  
 Claire Laxton, Ph.D  
 Department of Immunobiology


 REGISTER NOW! <https://cglink.me/2dA/r2323172>  
**FREE drink ticket (alcoholic or non-alcoholic) for first 30 attendees!**





**CAREER CAFE**  
 May 20<sup>th</sup>, 6-7:30 pm  
 Yale Science Building, Room 352  
 Food at 6 pm, included with registration.

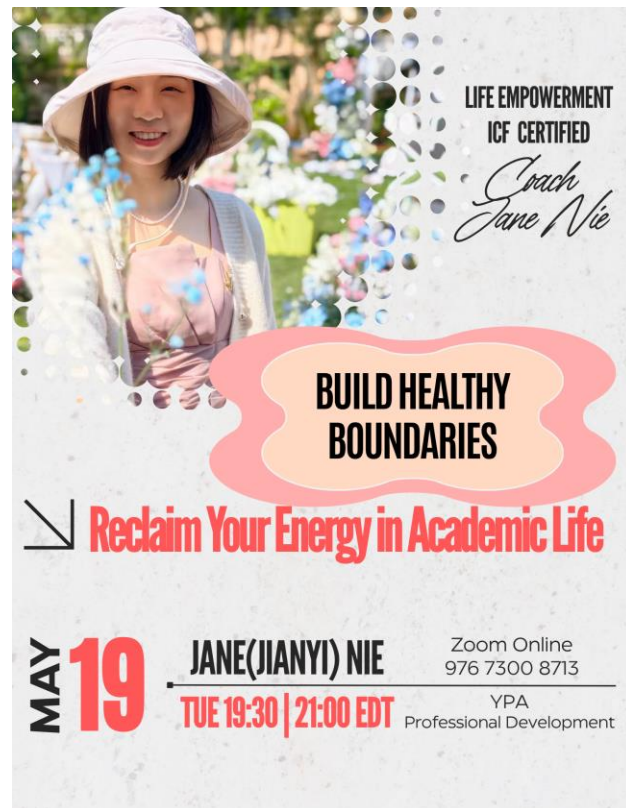

**Dr. Ling Xu**  
 Incoming Assistant Professor at  
 UF Scripps

Join us for an interactive conversation on career pathways  
 in academia

REGISTER THROUGH YALE CONNECT  
<https://cglink.me/2dA/r2324066>


## Upcoming Events

- ❖ June 26<sup>th</sup>: Webinar building healthy boundaries, with coach Jane Nie
- ❖ June 29<sup>th</sup>: Pint of Postdoc



## Announcements

- ❖ Rafael to step down, let's welcome Mahsa Mayeli as new PD co-coordinator!

No objections were raised





# Advocacy Committee

---

## **Benefits Expansion**

- Mental Health Benefits (surveying postdocs AND increasing therapists/networks covered by the insurance) survey almost ready to be sent out
- Potential discussion with Magellan in May regarding network expansion

## **Collaboration with Graduate Students:**

- Improving Yale Shuttle routes, reliability, and service coverage (survey and feedback collection)



# Advocacy Committee

---

**Ongoing coordination with the Office for Postdoctoral Affairs (OPA) is paused until Union bargaining is completed. Initial meeting with Union to develop productive collaboration.**

- PTO policy
- Grievance policy
- Childcare subsidy (initial contact made with Yale WorkLife)

## **Collaboration with the Professional Development OPA:**

- Revised IDP (Two-page IDP proposal drafted with NIH/NPA guidance; feedback received from OPA),
- Protected professional development time (Initial conversations with faculty/deans ongoing, endorsement for IDP by Faculty Kristen Brennand)



# Advocacy Committee

---

## Future Community Initiatives

- Reading circles and facilitated discussions on workplace climate, bullying, and microaggressions in Academia. Potential collaboration with Yale Office of Restorative Practices
- Development Advisory Team: Exploring a postdoc mentoring network to complement PI mentorship; initial information gathering on existing Yale mentoring programs and models.
- Tennis access, Cullman-Heyman Tennis Center; Postdocs are classified as staff and not eligible for student rates, so YPA is exploring possible subsidy options.

## Events:

YPA Yoga event on June 22 – no funds needed



# Office for Postdoctoral Affairs (OPA)

---

Reminder for Postdocs switching to Fellow that there is a Postdoc Fellow Health Subsidy to offset the cost of a Yale-provided plan. They should complete enrollment and email the form to their department admin. NIH T32 training grant slots and some other fellowships have a July 1 start date to align with the fiscal year or grant budget cycle.

Piloted revised orientation in May – half day event (10am-2pm) including reflection and goal-setting, working on aligning mentoring expectations, policies and benefits and identifying professional development activities to engage with. Next on June 18: <https://cglink.me/2dA/r2321697>

Upcoming programming:

- Finding Your Community at Your New Institution & Being Productive in Your New Research Environment – July 9, 12-1pm (lunch included): <https://cglink.me/2dA/r2324339>
- Surviving & Thriving as New Faculty Member – July 15, 12-1pm (lunch included): <https://cglink.me/2dA/r2324338>
- All events and orientations are [listed under Events](#).

Reminder to submit all receipts for this FY by end of June!

# Yale Postdoctoral Association (YPA)

**Empowering** Postdocs & Researchers

*Thank you for your attention*

